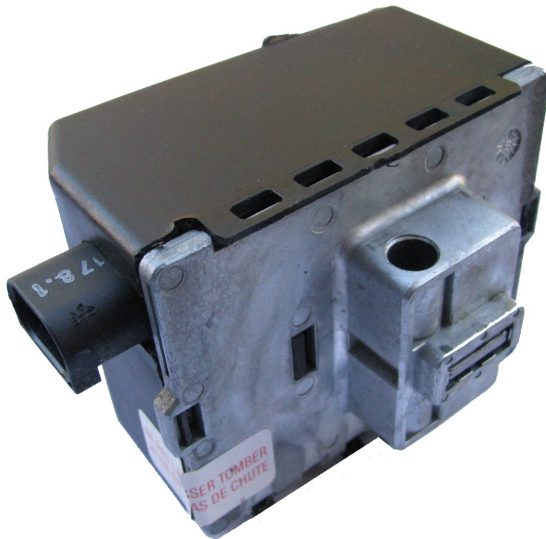


ESL emulator for RENAULT cars



Old type ESL

ELV connector:

- 1- minus (-)
- 2- plus (+)
- 3- can high (H)
- 6- can low (L)

Jumper on emulator:
SHORTED

New type ESL:

ELV connector:

- 1- minus (-)
- 2- plus (+)
- 3- can high (H)
- 6- can low (L)
- 4- connect to pin2 through 100ohm resistor

Jumper on emulator:

OPEN for 500kB CAN (late ones),
SHORTED for 250kB CAN systems

Status LEDs:

GREEN: "locked", YELLOW: "unlocked"

